



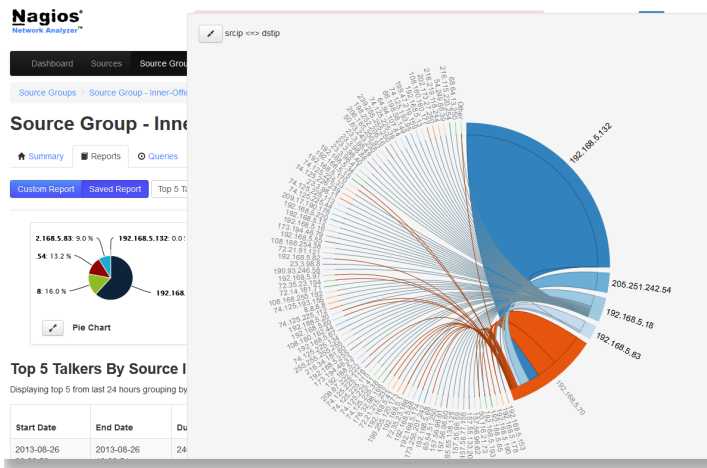
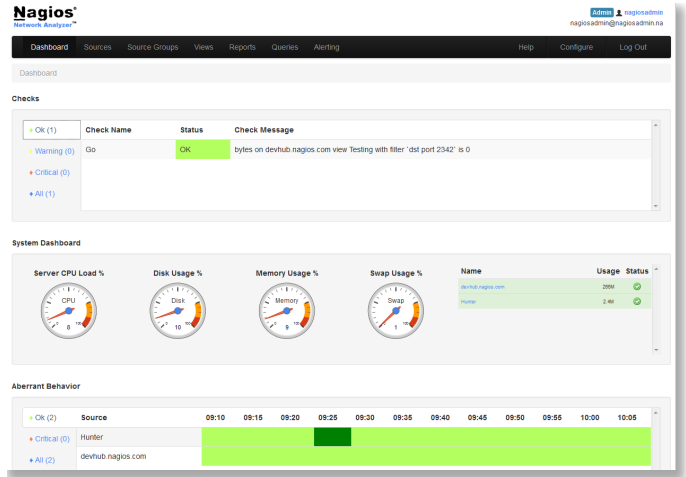
The Industry Standard in IT Infrastructure Monitoring

Nagios® is the leader and industry standard in enterprise-class network management solutions. It serves the needs of thousands of organizations in both horizontal and vertical markets by enabling them to identify and resolve IT infrastructure problems before they affect critical business processes. With its flexible design architecture, Nagios Network Analyzer is capable of monitoring NetFlow, sFlow, jFlow, cFlow, and IPFIX in nearly any environment. Network Analyzer provides organizations with relevant network data, allowing for in-depth assessment of a network's overall health.

Features Overview:

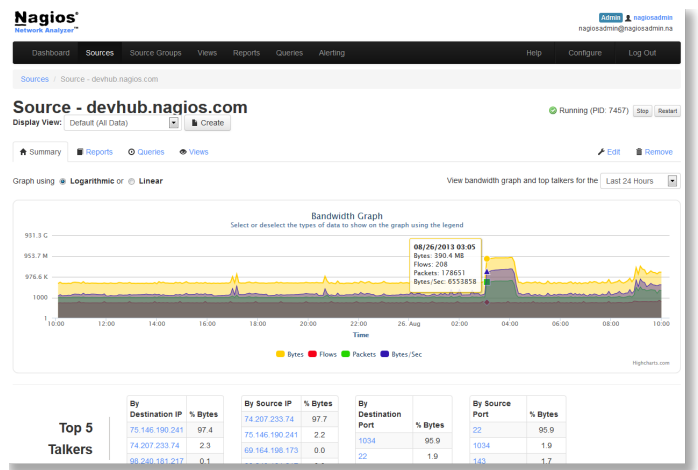
Comprehensive Dashboard

A powerful home screen dashboard provides users with a high-level overview of sources, checks, network flow data and much more. See at-a-glance metrics of your Network Analyzer server and be in-tune to your network's health and bandwidth statistics.



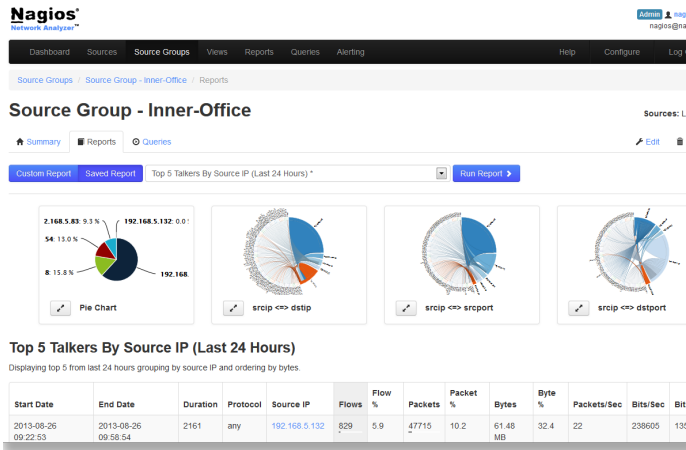
Advanced Graphs & Visualizations

Network Analyzer allows users to view network flow data in intuitive and easily understandable graphs. Advanced visualizations provide quick, in-depth insights on network traffic and bandwidth usage, while including the status of the overall network health. Logarithmic graphing allows Admins to view similar data sets in relevant scales for quick, easy interpretation.



Security and Reliability

Network Analyzer is capable of alerting users when suspicious activity is detected on the network. Prevent network compromises and maintain network security with Nagios Network Analyzer. Drill-Down with the "top talkers" list to quickly pinpoint problem devices and see who is using the most bandwidth.



Custom Application Monitoring

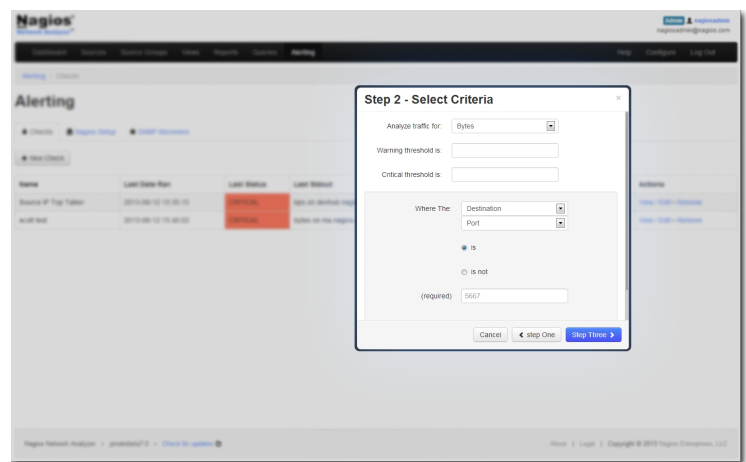
Individualized queries, reports, and views provide users with the ability to monitor network usage of specific applications to ensure business processes are running smoothly.

Specialized Views

Provide users with quick access to archived query data in a network “snapshot.” Views let you keep track of problematic network devices and maintain historical network flow data for extended periods of time for additional analysis.

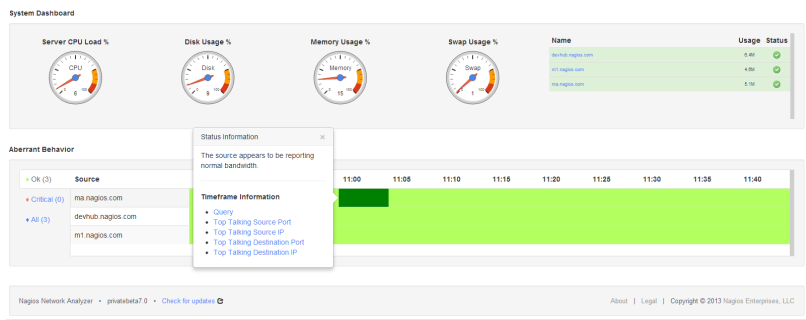
Automated Alert System

Receive alerts when abnormal activity takes place, or when bandwidth usage exceeds your network thresholds. Email notifications, Nagios alerts, and SNMP trap information can all be used to alert users to problems that arise on the network with the help of easy-to-use alert wizards.



Monitoring Server Integration

Seamlessly integrate Nagios Network Analyzer with Nagios XI to see exact server loads and hard disk space in the XI system. Easily create Nagios checks within Network Analyzer to send critical system metrics to your Nagios XI monitoring interface with the click of a button.



Advanced User Management

Multi-Tenancy capabilities allow IT teams to work together efficiently and effectively to keep the network running smoothly. Read-only user access allows for a look inside the network flow data while ensuring a secure environment for system administrators.

User Management

Username	Email	Access Level	API Access	Action
nagiosadmin	nagiosadmin@nagiosadmin.na	Admin (Full Access)	No	Edit
qwerty (Stan Levenson)	test@test.com	User (Read Only)	No	Edit • Delete
geoman (George Frankfurt)	geo@deutschland.de	User (Read Only)	No	Edit • Delete
mercurian (Freddie Mercury)	fred@queen.com	User (Read Only)	No	Edit • Delete
bobrobo (Bob Robertson)	rob@bob.com	User (Read Only)	No	Edit • Delete



Technical Features

Supported Flows

- NetFlow
- NetFlow v9
- NetFlow v7
- NetFlow v5
- Jflow
- Cflow
- Sflow
- IPFIX

Hardware Sources

- Routers
- Switches
- Firewalls
- Servers
- Workstations
- Network Interfaces

Supported Flow Devices

- All ASA Firewalls
- Most Layer 3 Catalyst Switches
- IOS Routers
- All Cisco NetFlow Devices
- All Juniper Jflow Devices
- All HP Sflow Devices
- Windows NetFlow Clients
 - *ntop nprobe*
 - *FlowTraq flow exporter*
- Linux NetFlow Clients
 - *fprobe*
 - *nprobe*

System Requirements

Server Operating Systems

- **Linux**
 - RHEL 6 32-bit and 64-bit, RHEL 7
 - CentOS 6 32-bit and 64-bit, CentOS 7

Virtual Hosts

- VMware Player, Workstation
- VMware Server, ESX
- Microsoft Virtual PC
- Microsoft Virtual Server

Server Hardware

- 1 GHz CPU (1-2 cores), 2 GB RAM (minimum)
- 2 GHz+ CPU (4 cores), 8 GB RAM (recommend)

Server Storage

- 40 GB free space (minimum)
- 80+ GB free space (recommend)**

**Dependent on amount of traffic and speed of collected flow data.

Browsers

- Firefox 4.0+
- Internet Explorer 9+
- Safari 2.0+
- Chrome 28.0+

More Information

For more information about Nagios products and services, or to order Nagios Network Analyzer, contact us:

- Online: www.nagios.com
- Phone: **888-NAGIOS-1** or **+1 651-204-9102**
- Email: sales@nagios.com

Copyright © 2018 Nagios Enterprises. The information contained in this document is provided for informational purposes only. Nagios Enterprises makes no warranties, express or implied, in this summary. Additional components and configuration may be required to achieve full functionality.